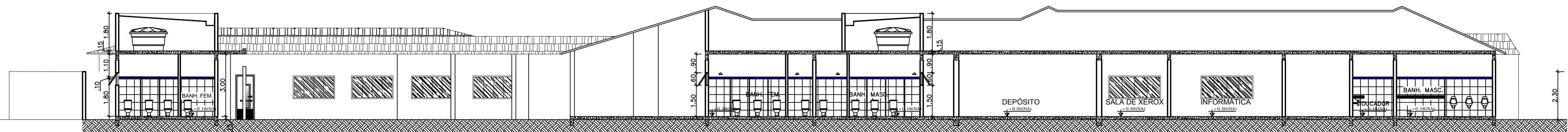
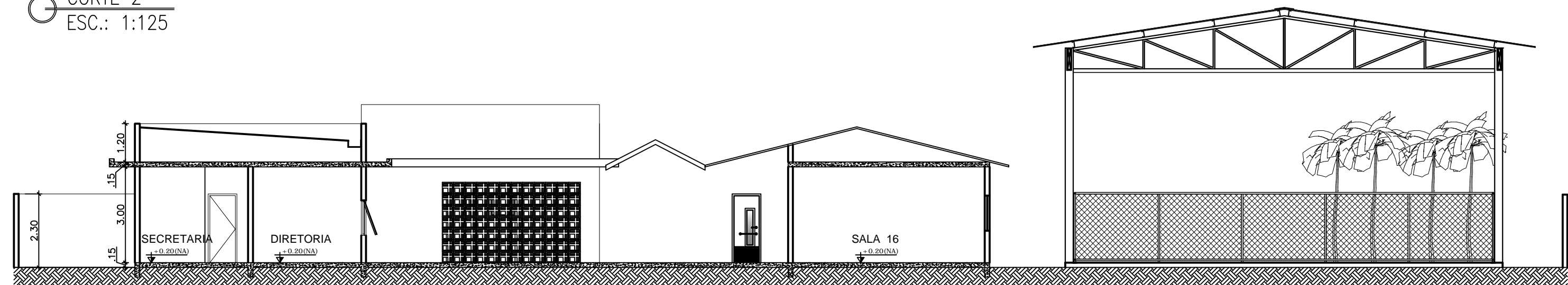


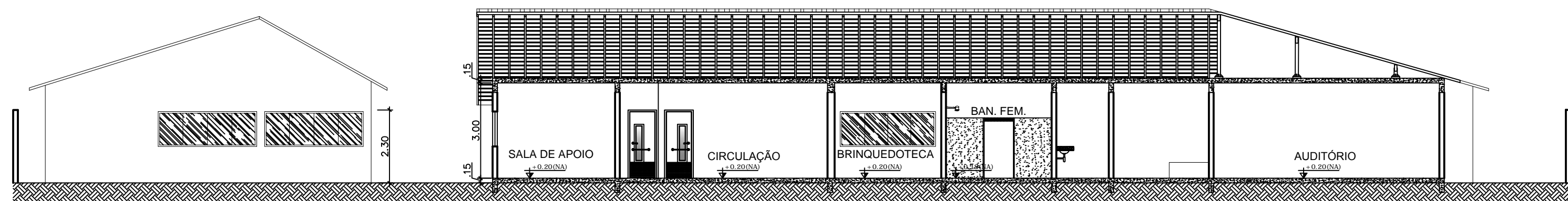
CORTE 1
ESC.: 1:125



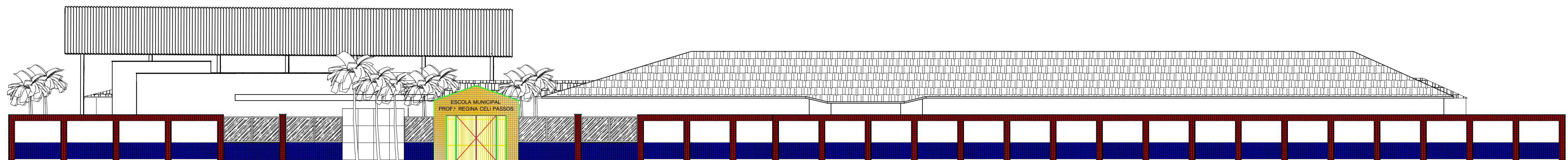
CORTE 2
ESC.: 1:125



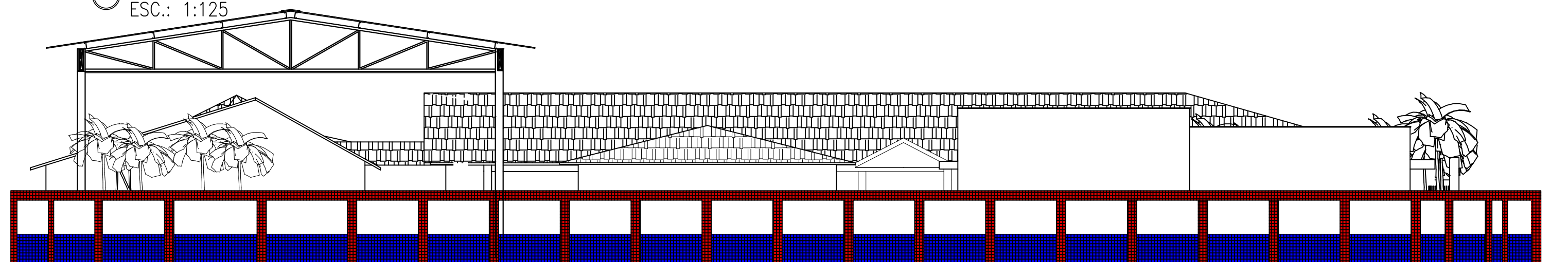
CORTE 3
ESC.: 1:125



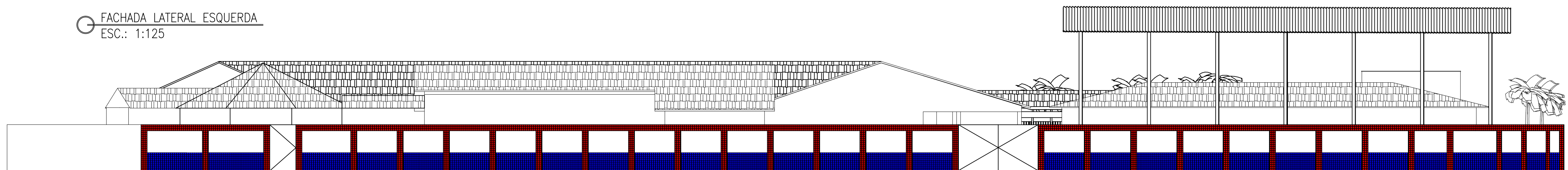
CORTE 4
ESC.: 1:125



FACHADA PRINCIPAL
ESC.: 1:125



FACHADA LATERAL ESQUERDA
ESC.: 1:125



FACHADA POSTERIOR
ESC.: 1:125

NOTAS:
- COTAS PREVALECEM SOBRE O DESENHO.

REVISÃO	ASSUNTO	DATA	AUTOR

CARIMBOS:

PROJETO ARQUITETÔNICO DE AMPLIAÇÃO E REFORMA
DA ESCOLA MUNICIPAL PROFESSORA REGINA CELI
PASSOS, SITO À AV. FRANCISCO DE ASSIS CARNEIRO
DA SILVA, 205, CAXIAS, QUISSAMÃ-RJ

DESENHO
CORTES E FACHADAS

R.T. DE PROJETO:	FOLHA:
ROSILENE DE OLIVEIRA BARRA LIMA	07/07
ESCALA:	DATA:
1/125	NOVEMBRO/2022